



LIGHTHOUSE
SCHOOLS PARTNERSHIP

Health and Safety Policy

Statutory

Policy Approved by the Board of Trustees

Signed: 

Date: 1 July 2021

Name: Adele Haysom

Chair of Board of Trustees

Authorised for Issue

Signed: 

Date: 1 July 2021

Name: Gary Lewis

Chief Executive

Document History

H&S Policy Statement
T:\Policies_Procedures\Policies\Statutory\Blagdon Health Safety Policy Jan 2022 (002).docx

Version	Owner	Date	Source
1.0	Clare Sanders	Published 7 September 2016	Adapted by Clare Sanders from a Single Academy H&S Policy issued by Priory Community School Enterprises Ltd
2.0	Clare Sanders	Annual renewal/approval by Board of Trustees 11 July 2017	Renewal only - no changes
2.1	Clare Giordmaine	07/02/18	Page 5 updated due to LSP growth
3.0	Louise Malik	December 2018	Regular update
4.0	Louise Malik	March 2021	Scheduled update

Date document adopted	
Review cycle	Biennial
Review date	February 2023

This Policy applies to all schools and employees within the Lighthouse Schools Partnership.

Contents

Section 1 - Lighthouse Schools Partnership - policy statement, strategic organisation and summary of arrangements (separate document)

1. Lighthouse Schools Partnership Health and Safety Policy Statement
2. Lighthouse Schools Partnership Organisation and Responsibilities

Appendix A - A high level summary of the Trust's strategic approach to effective Health and Safety management

Section 2 - School/Central Team - details of the organisation and the arrangements for ensuring health, safety and wellbeing (this document)

1. Aims
2. Legislation
3. Roles and responsibilities
4. Monitoring
5. Links with other policies
6. Accident reporting
7. Driving at work
8. Equipment
9. Fire
10. Food Safety
11. Glazing
12. Hazardous Substances
13. Infection prevention and control
14. Lettings
15. Lockdown procedure
16. Lone working
17. Manual handling
18. New and expectant mothers
19. Occupational stress
20. Off-site visits
21. Risk Assessments
22. Site security
23. Smoking
24. Training
25. Violence at work
26. Warning and Banning
27. Working at height

Appendix 1 - A high level summary of the School's strategic approach to effective Health and Safety management

Appendix 2 - Fire safety checklist (separate document)

Appendix 3 - Asbestos management plan and guidance (separate document)

Appendix 4. Asbestos record (separate document)

Appendix 5 - Asbestos management and communication plan (separate document)

Appendix 6 - Accident report (separate document)

Appendix 7 - Recommended absence period for preventing the spread of infection (separate document)

Appendix 8 - Schedule of school risk assessments (separate document)

SECTION 2

HEALTH AND SAFETY POLICY

BLAGDON PRIMARY SCHOOL

ORGANISATION AND RESPONSIBILITIES

Approved Policy by Local Governing Body:

Signed:

Name: Chris Mills, Chair of Governors

Date:

Signed:

Name: Jenny Campbell, Headteacher

Date:

A high level summary of the school's strategic approach to delivering this policy, and ensuring effective Health and Safety management is summarised in Appendix 1.

1. Aims

The school aims to:

- Provide and maintain a safe and healthy environment
- Establish and maintain safe working procedures amongst staff, pupils, contractors and all visitors to the school site
- Have robust procedures in place in case of emergencies
- Ensure that the premises and equipment are maintained safely, and are regularly inspected

2. Legislation and policy framework

This policy is based on advice from the Department for Education on [health and safety in schools](#) and the following legislation:

- [The Health and Safety at Work etc. Act 1974](#), which sets out the general duties employers have towards employees and duties relating to lettings
- [The Management of Health and Safety at Work Regulations 1992](#), which require employers to make an assessment of the risks to the health and safety of their employees

- [The Management of Health and Safety at Work Regulations 1999](#), which require employers to carry out risk assessments, make arrangements to implement necessary measures, and arrange for appropriate information and training
- [The Control of Substances Hazardous to Health Regulations 2002](#), which require employers to control substances that are hazardous to health
- [The Reporting of Injuries, Diseases and Dangerous Occurrences Regulations \(RIDDOR\) 2013](#), which state that some accidents must be reported to the Health and Safety Executive and set out the timeframe for this and how long records of such accidents must be kept
- [The Health and Safety \(Display Screen Equipment\) Regulations 1992](#), which require employers to carry out digital screen equipment assessments and states users' entitlement to an eyesight test
- [The Gas Safety \(Installation and Use\) Regulations 1998](#), which require work on gas fittings to be carried out by someone on the Gas Safe Register
- [The Regulatory Reform \(Fire Safety\) Order 2005](#), which requires employers to take general fire precautions to ensure the safety of their staff
- [The Work at Height Regulations 2005](#), which requires employers to protect their staff from falls from height
- [Control of asbestos regulations 2012](#), which details the 'duty to manage' asbestos, to protect anyone using or working in the premises from the risks to health that exposure to asbestos causes.
- [The Construction \(Design and Management\) Regulations 2015](#), the main set of regulations for managing the health, safety and welfare of construction projects.
- [Legionella bacteria in water systems \(L8\)](#), contains practical guidance on how to manage and control the risks in your system
- [Provision and Use of Work Equipment Regulations 1998](#) (PUWER), place duties on people and companies who own, operate or have control over work equipment

The school follows [national guidance published by Public Health England](#) when responding to infection control issues.

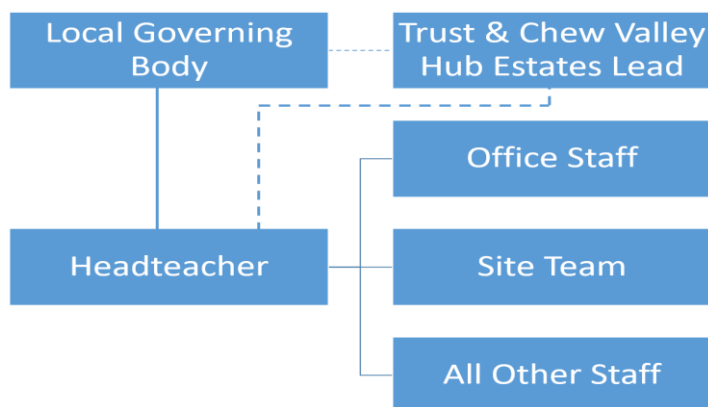
This policy complies with our funding agreement and articles of association.

This policy complies with the Trust's Health and Safety Policy Statement

3. Roles and responsibilities

The following is a structure and an outline of duties and responsibilities that have been assigned to the Headteacher, Local Governing Body and members of staff.

3.1. The Local Governing Body



The Local Governing Board (LGB) are responsible for complying with health and safety legislation and the Trust's Health and Safety Policy. Whilst the LGB holds these responsibilities (as a committee of the Board of Trustees) it may delegate day-to-day responsibility to the Headteacher.

The Local Governing Body must ensure that:

- The LGB has a duty to take reasonable steps to ensure that staff, pupils, visitors and contractors are not exposed to risks to their health and safety. This applies to activities on or off the school premises.
- Where reasonably practicable sufficient resources are allocated and authorised within the school's budget to meet statutory procedures and standards for health and safety within the school.
- The school maintains and updates a proportionate and prioritised risk register as part of a holistic risk management process.
- Competency, management, monitoring and auditing of all statutory requirements, compliance contracts, asbestos management, fire risk assessments, water hygiene management, management of radioactive sources and all other maintenance services agreements are carried out on the school premises and in line with current legislation.
- The Local Governing Body appoints a Health and Safety Governor and receives an annual audit of health and safety systems and standards for the school.
- There are effective arrangements for business continuity and an effective emergency plan and emergency procedures for the safe evacuation and lockdown of the school.
- Health and safety is on the agenda by including it intrinsically with business discussions.
- A Health and Safety Committee is established with key representation from senior school staff and staff groups. The chair must be a person in a position of responsibility and influence. The purpose and objectives of the committee are to be defined and the committee must meet a minimum of three times per year.

- Ensure that the Headteacher reports areas of non-compliance to the Chief Executive.

The Trust, as the employer, also has a duty to carry out the following activities. The task of carrying out these duties is delegated from the Board of Trustees to the Local Governing Body:

- Assess the risks to staff and others affected by school activities in order to identify and introduce the health and safety measures necessary to manage those risks.
- Inform employees about risks and the measures in place to manage them.
- Ensure that adequate health and safety training is provided.

3.2. The Headteacher

The Headteacher is responsible for health and safety day-to-day. This involves:

- Implementing and complying with the health and safety policy
- Ensuring there is enough staff to safely supervise pupils
- Working in collaboration with the Chief Financial and Operating Officer and the Hub Estates Lead
- Maintaining and updating the schools risk register
- Ensuring that the school building and premises are safe and regularly inspected
- Providing adequate training for school staff
- Ensuring appropriate evacuation procedures are in place and regular fire drills are held
- Ensuring that in their absence, health and safety responsibilities are delegated to another member of staff.
- Ensuring all risk assessments are completed and reviewed.
- Monitoring cleaning contracts, and ensuring cleaners are appropriately trained and have access to personal protective equipment, where necessary.
- Co-operating with the Local Governing Body to advise on any safety policies that need to be introduced, to enable health and safety policy and procedures to be implemented and complied with.
- Ensuring a positive health and safety culture is encouraged and developed within the school.
- Ensuring effective health and safety management arrangements are in place for carrying out statutory requirements, regular inspections, surveys, risk assessments, implementing actions and submitting inspection reports to the local governing body and other agencies where necessary.
- Ensuring that there are effective arrangements in place for business continuity along with an emergency plan and/or relevant emergency procedures, and that they are effectively communicated to all students, staff, contractors, volunteers, visitors, other members of the public and, where applicable, emergency services and the Local Authority as part of Safeguarding.
- Communicating the policy and other appropriate health and safety information to all relevant people, including contractors.

- Carrying out health and safety investigations, or to ensure an investigation has been carried out by a competent person.
- Ensuring all staff have had induction training and are competent to carry out their roles and are provided with adequate information, instruction and training.
- Ensuring that a Health and Safety Committee is established with key representation from senior school staff and staff groups. The chair must be a person in a position of responsibility and influence. The purpose and objectives of the committee are to be defined and the committee must meet a minimum of three times per year.
- Ensuring consultation arrangements are in place for staff. This will be in partnership with their trade union representatives (where appointed) and recognising the right of trade unions in the workplace.
- Reporting to the local governing body and the Trust's Chief Executive and Chief Financial and Operating Office, respectively, including any areas of non-compliance and any hazards which cannot be rectified within the school's budget.
- Ensuring that the premises, plant and equipment are maintained in a safe working condition.
- Ensuring that the school appoints a lead first aider and lead on pupil medication. This can be held by one postholder.
- Ensuring that the school has a sufficient number of training first aiders, including paediatric first aid if applicable.
- Ensuring that the school appoints a named Educational Visits Co-ordinator and Lead/Deputy Party Leaders, who have received relevant training to carry out the role.
- Ensuring that pupil off site visits or learning outside of the classroom has effective health and safety management arrangements in place for pupils and staff to:
 - Ensure risk assessments for the activities are undertaken, and suitable and sufficient action plans and procedures are implemented, and
 - Ensure information and arrangements to parents/carer's of pupils on all off-site visits or learning outside of the classroom activities are communicated effectively.

Some health and safety tasks have been delegated by the Headteacher to the Office Staff/Site Team. It is clearly understood by everyone concerned that, the delegation of certain duties will not relieve the Headteacher from the overall day-to-day responsibilities for health and safety within the school.

The Headteacher is also required to:

- Be responsible for checking competency, managing, monitoring and auditing all compliance contracts awarded by the school and maintenance service agreements carried out on the school premises.
- Develop and implement relevant action plans based on risk assessments, outcomes of meetings, audits and inspections and emergency arrangements.

- Review existing health and safety policies and procedures in the school, to ensure all staff, students and contractors adhere to them.
- Be responsible for the implementation of effective arrangements for business continuity and an emergency plan, emergency procedures and the safe evacuation and lockdown of school premises.
- To ensure that the school's asbestos register and the asbestos management plan is maintained and available as required.
- Investigate all serious incidents and liaise with appropriate authorities and third parties as necessary.
- Convene and attend all Health and Safety Committee meetings, or equivalent. Working to ensure that a Health and Safety Committee is established, or incorporated within another committee, with key representation from senior school staff and staff groups. The purpose and objectives of the committee are to be defined and the committee must meet a minimum of three times per year.
- Monitor purchasing and contracting procedures to ensure compliance with the schools Health and Safety Policy.
- Ensure there is a systematic and methodical system of servicing and inspection to maintain workplace equipment in the school.
- Ensure that first aid boxes are available in agreed strategic places around the site and that these are inspected on a termly basis, or as required.
- Be responsible for checking the competency of contractors. Managing, monitoring and auditing all statutory requirements, compliance contracts, asbestos management, fire risk assessments, water hygiene management, management of radioactive sources and all other maintenance service agreements carried out on the school premises. This should be undertaken with guidance from the Trust's Chief Financial and Operating Officer.
- Ensure competency of all contractors engaged by the school to undertake work or activities at the school e.g. insurance, financial viability, health and safety policies, Exor registered, method statements, risk assessments, accident records, DBS.
- Ensure building projects comply with the Construction (Design and Management) Regulations 2015 (CDM 2015), length or project as well as other statutory instruments e.g. 'Principal Designer' has been appointed.
- Ensure reasonable attempts to identify the hazards arising out of any contractors work or activities are undertaken. Provide any health and safety information to contractors' e.g. asbestos register/location, underground services, floor loading, safe working loads, school activities, ensuring safeguarding requirements are met.
- Reporting any areas of non-compliance and any hazards which cannot be rectified within the school's budget.
- Ensure all staff are made aware of the contents of the Health and Safety Policy and their responsibilities within it.
- Ensure the development of health and safety development plans as required.
- Carry out termly Health & Safety Inspections (as a minimum - 3 times per year) of the school site and buildings. Using the template document provided within

Every, ensure that equipment, furniture and activities are safe and record these inspections, reporting any defaults in line with school procedure where required. Arrange for the repair, replacement or removal of any item of furniture or equipment that have been identified as unsafe.

3.3. Site Team / Compliance Contractors

The Site Team is responsible and accountable to the Headteacher for all matters relating to health, safety and welfare within the scope of their duties.

The Site Team's responsibilities are to:

- Report to the Headteacher any non-compliance, defects and hazards that are brought to his/her notice.
- Notify the Headteacher whenever contractors are due to enter the school to undertake maintenance, service or works contracts. Any works that affect the fabric of the building will be subject to a permit to work.
- Ensure all relevant information, surveys, inspections, statutory and compliance findings are communicated to the Headteacher for actions to be considered, authorised and implemented.
- Support and contribute to the effective operation of the Health and Safety Committee, or equivalent.
- Be responsible for coordinating all contractual work and maintenance carried out on school premises, including health and safety matters concerned with other contractors.
- In conjunction with the Headteacher, ensure that strict procedures are laid down for building work such as roofing, excavation and drainage, alterations to building structures, refurbishments and renovations or re-modelling schemes.
- Ensure that all site, cleaning and catering staff are equally aware of the school's Health and Safety Policy and that they are aware of any arrangements of the policy that affects their work activities, e.g. storage arrangements, materials, equipment and hazardous substances.
- Implement a systematic and methodical system of servicing, inspecting, maintaining and checking workplace equipment within the school. Once tested ensuring that a full list of items tested is generated and retained.
- Implement a systematic and methodical system to ensure that all safety systems are checked and serviced, e.g. fire alarm, fire doors, firefighting equipment, smoke detectors, etc.
- Implement a systematic and methodical system to ensure that the use of showers and all water systems are checked and maintained to ensure the control of Legionella.
- Ensure asbestos information is provided to all relevant contractors to enable them to plan and undertake their works without risk of exposure to asbestos fibres.
- Ensure that all contractors share the school's commitment to safeguarding children.

- Undertake and co-ordinate the site team's specific emergency procedures, as detailed in the emergency plan.
- Manage full details of Compliance contracts and ensure they are carried out according to the contracts in a timely manner, maintaining full records of visits.

3.4. Senior Teachers

Senior Teachers are responsible to the Headteacher for the health and safety of all staff, workplaces and activities under their control. To achieve this, their duties include the following:-

- Developing strong, positive health and safety attitudes among those employees reporting directly to them. Ensuring that a positive health, safety and welfare awareness culture is also developed, actively encouraged and reinforced with all students.
- Applying the school's Health and Safety Policy to their own department or area of work and be directly responsible to the Headteacher for the application of the health and safety procedures and arrangements to all staff and students.
- Developing, publishing and sharing with members of the team, specific Health and Safety procedures for high risk departments, such as Science, Design and Technology, PE and Art.
- Maintaining or having access to an up to date library of relevant published health and safety guidance from sources including CLEAPSS , AfPE and ensure that all staff are aware of and make use of such guidance.
- Ensuring regular health and safety risk assessments are undertaken for the activities for which they are responsible and that control measures are implemented and shared with all staff.
- Ensuring that appropriate safe working procedures are brought to the attention of all staff under their control.
- Ensuring that where necessary, the appropriate personal protective equipment is available, in good condition and used and that any other identified safety measures in the risk assessment are implemented.
- Resolving any health, safety and welfare problems members of staff refer to them, and inform the Headteacher of any problems to which they cannot achieve a satisfactory solution within the resources available to them.
- Carrying out termly inspections (as a minimum - 3 times per year) of their areas of responsibility to ensure that equipment, furniture and activities are safe and record these inspections, reporting any defaults in line with school procedure where required. Arrange for the repair, replacement or removal of any item of furniture or equipment that has been identified as unsafe.
- Checking the adequacy of fire precautions and procedures in liaison with the Headteacher. Ensuring that a copy of the lockdown, Fire Action Notices and assembly point(s) are prominently displayed in all rooms and areas for which they are responsible.
- Ensuring, so far as is reasonably practicable, the provision of sufficient information, instruction, training and supervision to enable other employees

and students to avoid hazards and contribute positively to their own health and safety.

- Establishing acceptable housekeeping and safe storage standards, in all areas of their responsibility.
- Developing a training plan that includes specific job instructions, induction and health and safety training for new or transferred employees. Ensuring that the training needs of their staff are monitored and training opportunities made available. Notify the Headteacher of any identified training needs annually via the training development plan and as part of the induction programme for any new staff that join during the year.
- Ensuring that all accidents (including dangerous occurrences) occurring within their department are promptly reported and investigated using the appropriate forms etc.

3.5. Teaching Staff and Supply Teachers

Teaching Staff and Supply Teachers are responsible to the Headteacher for the health and safety of themselves, other staff and students, and activities under their control. In order to achieve this, their duties include the following:-

- Ensuring that a positive health, safety and welfare awareness culture is developed, actively encouraged and reinforced with all students.
- Implementing the health, safety and welfare procedures for students at a level appropriate for their requirements. Ensuring that these procedures are explained in terms that they can be easily understood.
- Carrying out safety briefings that refer to specific risk assessments, especially before any hazardous or high-risk activities and lessons. Seeking information on any special safety measures that must be adopted in their own areas of responsibility and ensuring that they are adhered to.
- Ensuring that all students, probationers and supply teachers are aware of the general health and safety requirements of the school and the detailed requirements, or arrangements for activities relevant to them.
- Ensuring, so far as is reasonably practicable, the provision of sufficient information, instruction, training and supervision to enable other employees and students to avoid hazards and contribute positively to their own health and safety.
- Exercising effective supervision of students and maintain an awareness of emergency procedures in respect of lockdown, fire, first aid and accident or incident reporting.
- Setting an example by personally following safe working practices.
- Ensuring that where necessary, the appropriate personal protective equipment is available, in good condition and used and that any other identified safety measures in the risk assessment are implemented.
- Ensuring that all electrical and other equipment, particularly in higher risk areas, is visually checked before use.
- Reporting to the Headteacher any defects in equipment or identified inadequacies in procedures. N.B where any defect renders the equipment

potentially hazardous, it should be isolated and clearly labelled 'awaiting repair', until repaired or replaced.

- Integrating all relevant aspects of health and safety into the teaching process and if necessary, giving special lessons - e.g. the use of equipment in technology lessons.
- Highlighting any training needs deemed necessary to fulfil their role to their line manager.
- Establishing acceptable housekeeping and safe storage standards, in all areas of their responsibility.

3.6. Other Employees

Under the Health and Safety at Work Act etc. 1974 all employees have general health and safety responsibilities. Staff must be aware that they are obliged to take care of their own health and safety whilst at work along with that of others who may be affected by their actions.

All employees have responsibility to:

- Take reasonable care of their own health and safety and that of others who may be affected by what they do at work
- Comply with the Trust and school's health and safety policy and procedures at all times.
- Work in accordance with training and instructions
- Model safe and hygienic practice for pupils
- Understand emergency evacuation procedures and feel confident in implementing them
- Report all accidents, incidents and dangerous occurrences in line with the reporting procedure.
- Report all defects in condition of premises or equipment and any health and safety concerns immediately to their line manager and/or use the system available for doing this, and where relevant, taking any immediate safety action to stop the issue causing harm to others while a remedy is put in place.
- Report immediately to their line manager any shortcomings in the schools arrangements for health and safety.
- Co-operate with the schools leadership and management on all matters relating to health and safety
- Not to intentionally interfere with or misuse any equipment or fittings provided in the interests of health safety and welfare.
- Inform their immediate line manager if something happens that might affect their ability to work, e.g. suffering an injury, taking prescribed medications that could affect them, penalty points on a driving license, becoming pregnant or any other matter that may impact on the safe and healthy performance of their role.
- Ensure that they only use equipment or machinery that they are competent/have been trained to use.

- Make use of all necessary control measures and personal protective equipment provided for safety or health reasons.

3.7. Pupils and parents

All pupils and parents are required to:

- Adhere to detailed procedures and policies at the school,
- Cooperate with all staff on health and safety matters,
- Not interfere with anything provided to safeguard their own health and safety,
- Take reasonable care of their own health and safety,
- Report all health and safety concerns to a member of staff.

3.8. Contractors

All contractors must report to reception, be signed in and given an identity/visitors badge. On leaving the site they will need to sign out and inform the appropriate member of staff of the work that has been carried out and any further work that is required.

Contractors will receive induction and agree health and safety practices with the Headteacher before starting work. Before work begins the contractor will provide evidence that they have completed an adequate risk assessment of all their planned work.

A contractor's health and safety record will be taken into consideration as part of any procurement selection process.

3.9. Visitors

All visitors must report to reception, be signed in and given an identity/visitors badge. On leaving the site visitors will need to sign out.

Visitors will be provided with site safety information on arrival.

3.10. Work Experience Students

A nominated person will provide health and safety induction to work experience students. The nominated person will also carry out the risk assessment and ensure all suitable and relevant checks are carried out on the work experience provider.

The student(s) will be monitored/supervised by the class teacher or other member of staff that they are assigned to and liaise if necessary with the nominated person.

3.11. First Aiders and Nominated Persons

Staff, who are competently trained, will be appointed as first aiders and will receive refresher training as necessary. First Aiders will be required to ensure that they have a fully stocked first aid kit at their normal place of work to enable them to respond effectively to any notified incident. First Aiders should also ensure that the first aid

cupboard has a stock of incident reporting forms to enable them to complete and report the incident in a timely manner.

Staff, who are competently trained will be appointed as first aiders and will receive refresher training as necessary to:

- Attend to injuries resulting from minor accidents occurring at the school and ensure that students receive appropriate attention and advice. Parent/guardian to be informed.
- Depending on advice from paramedics, the parent/guardian or member of staff, escort them to a doctor or hospital where injuries are considered more serious. Telephone parent/guardian to inform of status of student.
- To complete accident reports in respect of all incidents affecting staff, students and other persons on site.
- Immediately inform the Headteacher of all serious incidents.
- To inform the Headteacher of all RIDDOR reportable incidents within 24 hours of the incident occurring.

A sufficient number of trained first aiders are appointed taking into consideration the hours that the school is open for and size of the school site (e.g. several individual buildings).

3.12. First Aid Coordinator

The First Aid Coordinator will develop and maintain working relationships with other staff, work effectively and in co-operation with all other staff in the school using their own knowledge and skills, to contribute positively to the overall welfare of the school and its students.

The First Aid Coordinator will be responsible for:

- Maintaining school and student records of first aid support given to staff and students.
- Maintaining first aid stocks and records, ensuring that sufficient appropriate materials and equipment are available to administer first aid when the need arises and maintaining and restocking first aid boxes.
- Completing accident reports in respect of all accidents, incidents and dangerous occurrences affecting staff, students and other persons on site.
- Immediately informing the Headteacher of all serious incidents
- Informing the school's Headteacher of all RIDDOR reportable incidents within 24 hours of the incident occurring.
- Analysing the accidents and reporting them to the Health & Safety Committee, or equivalent, on a termly basis.
- Maintaining an up-to-date log of current first-aiders and ensuring this information is distributed/displayed as necessary

3.13. Appointed Educational Visits Coordinator (EVC)

An Educational Visits Coordinator (EVC) has been appointed by the school.

The Educational Visits Coordinator's responsibilities are to:

- Attend appropriate and relevant training when required to ensure the competence for the role.
- Coordinate pupil off-site visits or learning outside the classroom and ensure that effective health and safety management arrangements are in place for pupils, staff and volunteers.
- Ensure that suitable risk assessments have been recorded for the activity and suitable and sufficient actions and procedures have been implemented.
- Ensure that advice from the SENCO is sought if applicable for individual students.
- Ensure that there are emergency contingencies, alternative options and that necessary details and information is provided at key locations, or within online / server systems.
- Communicate all relevant information and arrangements to providers of off-site visits, staff, students and parents/carers of students to ensure that the key learning objectives of the visit can safely be achieved.
- Ensure that sufficient finances and resources are allocated and authorised for pupil off-site visits or learning outside the classroom activities.
- Take reference from the [National Guidance for the Management of Outdoor Learning, Off-Site Visits and Learning outside the Classroom](#), the Foreign Office, and the Trust, when appropriate.

3.14. Trade Union Safety Representative

There is no requirement to have a union health and safety representative at the school. If a person wishes to represent staff, they should have been employed by the school for the preceding two years or have enough experience in similar employment. The Safety Representative and Safety Committees Regulations 1977, as amended, has detailed information on what the law requires employers to undertake when consulting staff on health and safety matters.

Any Trade Union Safety Representative will be encouraged by the Headteacher to fulfil his or her duties as well as being released for any appropriate training. They will also consult regularly with the Safety Representative on health & safety matters. He or she will be entitled to inspect the school in accordance with the agreed Trade Union procedures.

4. Monitoring

This policy will be reviewed by the Headteacher biennially.

At every review, the policy will be approved by the school's Health and Safety Committee

5. Links with other policies

- Stress Management
- Risk Management
- Safeguarding
- Supporting pupils with medical conditions
- Business Continuity and Critical Incident Plan

6. Accident, First Aid and reporting

6.1. Accident record book

An electronic or paper-based accident form/book will be completed as soon as possible after the accident occurs by the member of staff or first aider who deals with it. An accident form template can be found in appendix 6.

As much detail as possible will be supplied when reporting an accident.

Information about injuries will also be kept in the pupil's educational record.

Records held in the first aid and accident book will be retained by the school in line with the LSP Records Management Policy and in accordance with regulation 25 of the Social Security (Claims and Payments) Regulations 1979, and then securely disposed of.

6.2. Head injuries

The [NHS has advice on how to deal with Head injuries](#). The school will use its best judgement and will err on the side of caution on a case by case basis whether or not to contact NHS services directly or to advise family members to seek medical attention.

6.3. Reporting to the Health and Safety Executive

The Headteacher will keep a record in the Every system of any accident, incident or dangerous occurrence (an event that do not cause harm but do have the potential to cause injury or ill health) which could result in a reportable injury, disease, or dangerous occurrence as defined in the RIDDOR 2013 legislation (regulations 4, 5, 6 and 7).

Logging a potentially Reportable Incident in Every notify your Hub Estates Manager of the incident. The Hub Estates Manager will forward the information for advice from the Trust's appointed Health and Safety Advisor who will report incidents, where appropriate, to the Health and Safety Executive as soon as is reasonably practicable and in any event within 10 days of the incident. .

The issue will be 'completed' by your Hub Estates Manager on Every at such time as Delegated Services have either confirmed that they have reported the incident to the HSE or that it is unnecessary to do so. In the case of dangerous occurrences, the issue will be closed when any necessary remedial action has been taken.

Reportable injuries, diseases or dangerous occurrences include:

- Death
- Specified injuries. These are:
 - Fractures, other than to fingers, thumbs and toes
 - Amputations
 - Any injury likely to lead to permanent loss of sight or reduction in sight
 - Any crush injury to the head or torso causing damage to the brain or internal organs
 - Serious burns (including scalding)
 - Any scalping requiring hospital treatment
 - Any loss of consciousness caused by head injury or asphyxia
 - Any other injury arising from working in an enclosed space which leads to hypothermia or heat-induced illness, or requires resuscitation or admittance to hospital for more than 24 hours
- Injuries where an employee is away from work or unable to perform their normal work duties for more than 7 consecutive days.
- Where an accident leads to someone being taken to hospital.
- Where something happens that does not result in an injury, but could have done.
- Dangerous occurrences that do not result in an injury, but could have done.
Examples of near-miss events relevant to schools include, but are not limited to:
 - The collapse or failure of load-bearing parts of lifts and lifting equipment
 - The accidental release of a biological agent likely to cause severe human illness
 - The accidental release or escape of any substance that may cause a serious injury or damage to health
 - An electrical short circuit or overload causing a fire or explosion

6.4. Notifying parents

The Headteacher will inform parents of any significant accident or injury sustained by a pupil, and any first aid treatment given, on the same day, or as soon as reasonably practicable.

6.5. Reporting to Ofsted and child protection agencies

The Headteacher, in conjunction with the Chief Financial and Operating Officer, will notify Ofsted of any serious accident, illness or injury to, or death of, a pupil while in the school's care. This will happen as soon as is reasonably practicable, and no later than 14 days after the incident.

The Headteacher, in conjunction with the Chief Financial and Operating, will also notify the appropriate Local Authority of any serious accident or injury to, or the death of, a pupil while in the school's care.

6.6. Reporting to the Governors Health and Safety Committee

Details of all accidents, incidents or dangerous occurrences (events that do not cause harm but do have the potential to cause injury or ill health) which could result in a reportable injury, disease, or dangerous occurrence as defined in the RIDDOR 2013 legislation (regulations 4, 5, 6 and 7) are provided to the schools Health and Safety Committee, or equivalent. The Committee will be advised of issues and trends and of measures that can be implemented to prevent reoccurrence. The Committee will ensure that all actions are taken to prevent any reoccurrence, so far as is reasonably practicable.

6.7. Pupil Medications

Information on pupils who have specific medical requirements e.g. asthmatics, epileptics, is kept on the schools CPOMS system and made available electronically to the necessary staff.

Children and young people, who are asthmatic, are required to keep a spare inhaler at the school. Spare inhalers must be kept in a secure staffed areas and labelled with the child/young person's name. The secure storage area should be accessed by designated staff to ensure that the inhalers are available in an emergency.

Medication may only be administered for documented medical conditions where routine administration has been formally agreed or in an emergency situation, where it is critical to life and the Headteacher has prior written knowledge about the child or young person's medical condition. Any medication of this nature must be kept in a secure location and all relevant staff be informed and advised on how to access it.

Staff administering medication in an emergency must be fully trained to do so.

The Office Staff are responsible for:

- Administering prescription and other medicines where there is no alternative to them being taken in school time, when written parental consent has been obtained to do so.
- Collecting data including administration of medication, Personal Health Plans, consent forms and medication retained, and keeping it up to date at all times.
- Liaising with the Health and Safety Advisor, Health Centre, School Nurses and parents as appropriate.
- Managing the input, maintenance and retrieval of all medical data in respect of students and staff at the School, ensuring that confidential information is held securely.

Individual risk assessments should be completed for pupils requiring medication if risks are not adequately reflected in the parental consent form.

Arrangements for the administration of medication in the school will be in accordance with the school's Supporting pupils with medical conditions Policy.

7. Driving at work

Health and safety law applies to work activities on the road in the same way as it does to all other work activities. A risk assessment has been completed for work-related driving activity and considers control measures such as:

- Whether drivers are competent and capable of doing their work in a way that is safe for them and other people?
- Whether drivers are properly trained?
- Whether drivers have clear instructions about how to keep themselves safe while on the road?

The school has followed advice from the [HSE on driving at work](#).

8. Equipment

The Provision and Use of Work Equipment Regulations 1998 (PUWER) places duties on people and companies who own, operate or have control over work equipment.

All equipment and machinery is maintained in accordance with the manufacturer's instructions. In addition, maintenance schedules outline when extra checks should take place.

When new equipment is purchased, it is checked to ensure that it meets appropriate educational standards.

All equipment is stored in the appropriate storage containers and areas. All containers are labelled with the correct hazard sign and contents.

8.1. Electrical equipment

All staff are responsible for ensuring that they use and handle electrical equipment sensibly and safely.

Any pupil or volunteer who handles electrical appliances does so under the supervision of the member of staff who so directs them.

Any potential hazards, electrical faults or faulty fittings must not be used and must be reported to the Headteacher immediately.

Permanently installed electrical equipment is connected through a dedicated isolator switch and adequately earthed. [All isolator switches are clearly marked to identify their machine.](#)

Only trained staff members can check plugs.

Where necessary a portable appliance test (PAT) will be carried out by a competent person in line with the risk assessment. A PAT register is maintained and all defects identified are either repaired or removed immediately.

Electrical apparatus and connections will not be touched by wet hands and will only be used in dry conditions.

Maintenance, repair, installation and disconnection work associated with permanently installed or portable electrical equipment is only carried out by a competent person.

Staff are informed that they should not bring electrical items in from home unless they are new or a recent portable appliance test (PAT) can be evidenced.

Where it is necessary to use an extension lead this must be only as a temporary measure. Extension leads should be fully unwound.

Hirers of the school's facilities, contractors and visitors must ensure that any electrical equipment they bring in to the school must have an appropriate portable electrical test and be safe to use. Random checks of electrical equipment may be required to ensure compliance with this arrangement.

8.2. PE equipment

Pupils are taught how to carry out and set up PE equipment safely and efficiently. Staff check that equipment is set up safely before use.

Any concerns about the condition of the gym floor or other apparatus will be reported to the Site Team / Headteacher.

PE equipment will be inspected annually [by a competent person, and records kept](#).

8.3. Outdoor play equipment

External play equipment will only be used when supervised. The equipment will be checked daily by staff for any apparent defects and for contamination by animals.

Outdoor play equipment will be independently inspected annually by a suitably qualified individual.

8.4. Display screen equipment

All staff who use computers daily as a significant part of their normal work have a display screen equipment (DSE) assessment carried out. 'Significant' is taken to be continuous/near continuous spells of an hour or more at a time.

Staff identified as DSE users are entitled to an eyesight test for DSE use upon request, and at regular intervals thereafter, by a qualified optician (and a contribution towards corrective glasses provided if required specifically for DSE use in line with the Staff Expenses Policy).

8.5. Specialist equipment

Parents are responsible for the maintenance and safety of their children's individual specialist equipment such as wheelchairs. In school, staff promote the responsible use of such equipment.

9. Fire

The school maintains a fire log containing full details of evacuations, servicing and checks. The log is regularly updated by the Caretaker and Office Staff.

Emergency exits, assembly points and assembly point instructions are clearly identified by safety signs and notices, and free from obstructions. Final exit doors must be unlocked while there are people in the building.

Fire risk assessment of the premises is maintained and reviewed regularly.

Emergency evacuations are practised at least three times per year. Details should be recorded in the school's fire log book.

The fire alarm is a loud continuous bell.

Fire alarm testing will take place at least once a week. Manual break glass points from different zones should be used to trigger the alarm to ensure that all break glass or other points are in working order. Details should be recorded in the school's fire log book.

Fire extinguishers and emergency lighting are formally inspected at least annually. Details are recorded in the school's fire log book.

The location of explosive substances such as gas supply pipes, butane gas cylinders and highly flammable substances should be known and made available to emergency services as required.

New staff will be trained in fire safety as part of their induction training and all staff and pupils will receive annual refresher training and be made aware of any new fire risks.

In the event of a fire:

- The alarm will be raised immediately by whoever discovers the fire and emergency services contacted. Evacuation procedures will also begin immediately.
- Fire extinguishers may be used by staff only, and only then if staff are trained in how to operate them and are confident, they can use them without putting themselves or others at risk.
- Staff and pupils will congregate at the assembly points. These are the assembly points:
 - Main playground
 - Cricket Field
- Class teachers will take a register of pupils, which will then be checked against the attendance register of that day.
- The Headteacher will take a register of all staff.
- Staff and pupils will remain outside the building until the emergency services say it is safe to re-enter.

The school will have special arrangements in place for the evacuation of people with mobility needs and fire risk assessments will also pay particular attention to those with disabilities.

A fire safety checklist and fire drill/lockdown instructions can be found in appendix 2.

10. Food Safety

Food safety is managed through the Food Standards Agency advice and guidance. It is linked to occupational health and safety through the equipment and utilities used and the activities.

Food safety and hygiene uses a HACCP (Hazard Analysis and Critical Control Point) system similar in framework to risk assessment and risk control systems.

All activity using food including catering, curriculum activities and PTA events are controlled using the same standards.

11. Glazing

Glazing surveys are completed, as necessary, in critical locations and any required actions taken.

12. Hazardous Substances

Schools are required to control all hazardous substances. These can take many forms and the most common are detailed below:

12.1. Control of Substances Hazardous to Health (COSHH)

COSHH includes any form of hazardous material, including:

- Chemicals
- Products containing chemicals
- Liquids
- Fumes
- Dusts
- Vapours
- Fibres
- Nano-particles
- Mists
- Gases
- Bacteria and viruses

An inventory of all hazardous substances used on site is maintained by the school and reviewed regularly.

Control of substances hazardous to health (COSHH) risk assessments are completed by Office Staff/Headteacher and circulated to all employees who work with hazardous substances. Staff will also be provided with protective equipment, where necessary. The COSHH register is located in the School Office.

Staff use and store hazardous products in accordance with instructions on the product label. All hazardous products are kept in their original containers, with clear labelling and product information.

Any hazardous products are disposed of in accordance with specific disposal procedures.

Emergency procedures, including procedures for dealing with spillages, are displayed near where hazardous products are stored and in areas where they are routinely used.

12.1.1. Legionella

The school recognises that the management of water hygiene is essential to ensure the prevention of Legionnaires disease, which is a potentially fatal pneumonia caused by legionella bacteria, and other diseases caused by water borne organisms.

Legionnaire's disease can occur from exposure to legionella bacteria, usually in airborne water droplets, mists or vapours, generated from systems such as cooling towers, evaporative condensers and hot and cold water services. The propagation of Legionella bacteria is enhanced by the following system conditions:

- Where the water temperature in a system falls between 20°C and 45°C; the active temperature range of the bacteria
- Systems in which water is re-circulated or stored
- Situation where bacteria growth is supported by the presence of biofilms and other organic material, scale, rust or sludge which provide nutrients to the bacteria.

The Headteacher is appointed as the responsible person for implementing arrangements to control the risk of legionella within systems and for reviewing the effectiveness of the arrangements. The Headteacher appoints the Senior Teacher on site as the deputy responsible person and will ensure that arrangements are in place if either the responsible person or their deputy are not available.

The Headteacher will manage potential risk from Legionella exposure in accordance with current legislation, guidance and good practice by:

- Identifying and assessing sources of risk,
- Implementing, managing and monitoring Legionella control measures (detailed below),
- Ensuring that suitable and sufficient staff, training and financial resources are available,
- Keeping up to date records.

The following control measures are designed to mitigate the risk of Legionella exposure and should be delivered in accordance with [Legionella bacteria in water systems Approved Code of Practice](#):

- A Legionella risk assessment is carried out every three years. This risk assessment will be reviewed at least annually and when significant changes have occurred to the water system and/or building footprint.
- Little used water outlets will be flushed at least weekly
- Temperature checks will be completed at least monthly
- Disinfection of showers will be completed at least quarterly

- Calorifiers, thermostatic valves and water storage tanks will be inspected at least annually and the necessary cleaning/servicing undertaken
- Control measures will be completed by a suitable competent individual
- The Headteacher is responsible for ensuring that the identified control measures are conducted and recorded in the school's water log book.

If an outbreak of Legionella bacteria is expected the Headteacher should contact the Chief Financial and Operating Officer as a matter of urgency.

The necessary notification to the Health and Safety Executive along with the necessary remedial action will be undertaken immediately by suitable competent individual.

12.2. Gas safety

Installation, maintenance and repair of gas appliances and fittings will be carried out by a competent Gas Safe registered engineer.

Gas pipework, appliances and flues are regularly maintained.

All rooms with gas appliances are checked regularly to ensure that they have adequate ventilation.

12.3. Asbestos

The asbestos management plan and associated guidance is attached as Appendix 3.

Staff are briefed on the hazards of asbestos, the location of any asbestos in the school and the action to take if they suspect they have disturbed it. This training is incorporated in induction training for new staff and forms part of annual Health and Safety refresher training for staff.

An asbestos condition survey must be undertaken every year. If asbestos is identified, a decision must be made as to whether the asbestos should be removed, in consultation with the Trust's Chief Financial and Operating Officer. If the asbestos is not deemed to be a risk, due to its location and/or condition, the Headteacher will become responsible for its management.

A regular inspection system is in place to monitor the condition of the asbestos (where it is accessible) and the findings recorded. If any damage or flaking is noticed to an asbestos containing material, either during an inspection or otherwise, it should be reported immediately to the Headteachers and the Trust's Chief Financial and Operating Officer.

Material known to contain asbestos e.g. ceiling tiles, must never be drilled or screwed into, nor must any item be affixed to it e.g. posters, mobiles, especially with pins or staples.

Arrangements are in place to ensure that contractors are made aware of any asbestos in the area that they will be working in and that it is not disturbed by their work.

Contractors will be advised that if they discover material which they suspect could be asbestos, they will stop work immediately, until the area is declared safe, and report to the Headteacher. Contractors are required to sign and confirm that they have seen the

asbestos register in relation to the area they will be working in or the activities they will be undertaking.

A record is kept of the location of asbestos that has been found on the school site as detailed in Appendix 4.

13. Infection prevention and control

The school will follow recommended exclusion periods outlined by Public Health England, summarised in appendix 7.

Schools follow [national guidance published by Public Health England](#) to support infection control.

Staff and pupils are encouraged to follow this good hygiene practice, outlined below, where applicable.

13.1. Handwashing

Wash hands with liquid soap and warm water for 20 seconds, and, preferably, dry with paper towels. Use hand sanitiser if handwashing facilities are not available.

Always wash hands after using the toilet, before eating or handling food, after sneezing or coughing and after handling animals.

Cover all cuts and abrasions with waterproof dressings.

13.2. Coughing and sneezing

Cover mouth and nose with a tissue and wash hands after using or disposing of tissues in line with 'Catch It, Bin It, Kill It advice'.

Spitting is discouraged.

13.3. Personal protective equipment

Personal protective equipment will be provided free of charge where it is identified as an appropriate control measure.

Wear disposable non-powdered vinyl or latex-free CE-marked gloves and disposable plastic aprons where there is a risk of splashing or contamination with blood/body fluids (for example, nappy or pad changing).

Wear goggles if there is a risk of splashing to the face.

Use the correct personal protective equipment when handling cleaning chemicals.

13.4. Cleaning of the environment

Clean the environment, including toys and equipment, frequently and thoroughly.

13.5. Cleaning of blood and body fluid spillages

Clean up all spillages of blood, faeces, saliva, vomit, nasal and eye discharges immediately and wear personal protective equipment.

When spillages occur, clean using a product that combines both a detergent and a disinfectant and use as per manufacturer's instructions. Ensure it is effective against bacteria and viruses and suitable for use on the affected surface.

Never use mops for cleaning up blood and body fluid spillages - use disposable paper towels and discard clinical waste as described below.

Make spillage kits available for blood spills.

13.6. Laundry

Wash laundry in a separate dedicated facility.

Wash soiled linen separately and at the hottest wash the fabric will tolerate.

Wear personal protective clothing when handling soiled linen.

Bag children's soiled clothing to be sent home, never rinse by hand.

13.7. Clinical waste

Always segregate domestic and clinical waste, in accordance with local policy.

Used nappies/pads, gloves, aprons and soiled dressings are stored in correct clinical waste bags in foot-operated bins.

Remove clinical waste with a registered waste contractor.

Remove all clinical waste bags when they are two-thirds full and store in a dedicated, secure area while awaiting collection.

13.8. Animals

Wash hands before and after handling any animals.

Keep animals' living quarters clean and away from food areas.

Dispose of animal waste regularly, and keep litter boxes away from pupils.

Supervise pupils when playing with animals.

Seek veterinary advice on animal welfare and animal health issues, and the suitability of the animal as a pet

13.9. Pupils or staff vulnerable to infection

Some medical conditions make pupils vulnerable to infections that would rarely be serious in most children. The school will normally have been made aware of such vulnerable children. These children are particularly vulnerable to chickenpox, measles or slapped cheek disease (parvovirus B19) and, if exposed to either of these, the parent/carer will be informed promptly and further medical advice sought. These children should be advised to have additional immunisations, for example for pneumococcal and influenza.

Some medical conditions make staff vulnerable to infections that would rarely be serious in others. The school will normally have been made aware of such vulnerable staff.

Individual risk assessments should be completed for staff and pupils vulnerable to infection.

13.10. Exclusion periods for infectious diseases

The school will follow recommended exclusion periods outlined by Public Health England, summarised in appendix 7.

In the event of an epidemic/pandemic, the school will follow advice from Public Health England about the appropriate course of action.

14. Lettings of school facilities

This policy applies to lettings. Those who hire any aspect of the school site or any facilities will be made aware of the content of the school's health and safety policy by the Headteacher, and will have responsibility for complying with it.

15. Lockdown procedures

Management of the lockdown procedure is the responsibility of the Headteacher. The Headteacher will devise and communicate the lockdown procedure to all necessary staff, pupils, parents/carers, contractors and visitors.

The lockdown procedure will be practiced and reviewed at least annually.

16. Lone working

Lone working may include:

- Late working
- Home or site visits
- Weekend working
- Site manager duties
- Site cleaning duties
- Working in a single occupancy office

Potentially dangerous activities, such as those where there is a risk of falling from height, will not be undertaken when working alone. If there are any doubts about the task to be performed then the task will be postponed until other staff members are available.

If lone working is to be undertaken the colleague's line manager must will be informed about where the member of staff is and receive confirmation of their safe return.

A risk assessment should be completed for instances of lone working. The employee(s) has a responsibility to report any medical conditions that may make them unsuitable to work alone.

17. Manual handling

It is up to individuals to determine whether they are fit to lift or move equipment and furniture. If an individual feels that to lift an item could result in injury or exacerbate an existing condition, they will ask for assistance.

The school will ensure that proper mechanical aids and lifting equipment are available in school, where necessary and that staff are trained in how to use them safely.

A manual handling risk assessment should be carried out and recorded for all manual handling activities that pose a risk of injury to school staff.

Staff and pupils are expected to use the following basic manual handling procedure:

- Plan the lift and assess the load. If it is awkward or heavy, use a mechanical aid, such as a trolley, or ask another person to help.
- Take the most direct route that is clear from obstruction and is as flat as possible.
- Ensure the area where you plan to offload the load is clear.
- When lifting, bend your knees and keep your back straight, feet apart and angled out. Ensure the load is held close to the body and firmly. Lift smoothly and slowly and avoid twisting, stretching and reaching where practicable.

Expectant mothers must not undertake any hazardous manual handling activities.

18. New, breastfeeding and expectant mothers

Risk assessments will be carried out whenever any employee or pupil notifies the school that they are pregnant.

Appropriate measures will be put in place to control risks identified. Some specific risks are summarised below:

- Chickenpox can affect the pregnancy if a woman has not already had the infection. Expectant mothers should report exposure to antenatal carer and GP at any stage of exposure. Shingles is caused by the same virus as chickenpox, so anyone who has not had chickenpox is potentially vulnerable to the infection if they have close contact with a case of shingles.
- If a pregnant woman comes into contact with measles or German measles (rubella), she should inform her antenatal carer and GP immediately to ensure investigation.
- Slapped cheek disease (parvovirus B19) can occasionally affect an unborn child. If exposed early in pregnancy (before 20 weeks), the pregnant woman should inform her antenatal care and GP as this must be investigated promptly.

19. Occupational stress

The school is committed to promoting high levels of health and wellbeing and recognises the importance of identifying and reducing workplace stressors through risk assessment.

Systems are in place within the school for responding to individual concerns and monitoring staff workloads.

Schools should refer to the Trust's Stress Management Policy for further information.

20. Off-site visits

The School has appointed an Educational Visits Coordinator.

When taking pupils off the school premises, the school will ensure that:

- Risk assessments are completed where off-site visits and activities require them.
- All off-site visits are appropriately staffed.
- Staff will take a school mobile phone, a portable first aid kit, information about the specific medical needs of pupils along with the parents' contact details.
- There will always be at least one first aider on school trips and visits.
- For schools with Early Years Foundation Stage provision, there will always be at least one first aider with a current paediatric first aid certificate on school trips and visits, as required by the statutory framework for the Early Years Foundation Stage.

21. Risk Assessments

Assessing risk is an important part of the overall process used to control and mitigate risks in our school. The schools risk assessments consider what harm an activity may cause people and identifies the reasonable steps and control measures that we can take to prevent that harm.

Risk assessments are produced in consultation with all applicable staff.

Appendix 8 includes a list of the risk assessments that the school has in place. Risk assessments should be reviewed in a timely manner to reflect any changes in circumstances, procedures or legislation but at least every three years. Some risk assessments should be reviewed annually, and this is detailed in Appendix 8.

22. Site security

The Headteacher is responsible for the security of the school site in and out of school hours. They are responsible for visual inspections of the site, and for the intruder and fire alarm systems.

The following posts are key holders and will respond to an emergency during school open times:

- Headteacher
- Senior Teachers
- Weston Support Services

23. Smoking

Smoking is not permitted anywhere on the school premises. This includes electronic cigarettes.

24. Training

All staff are provided with health and safety training as part of their induction process and annual refresher training.

Staff who work in high risk environments, such as in science labs or with woodwork equipment, or work with pupils with special educational needs and disabilities (SEND), or work at height are given additional health and safety training.

25. Violence at work

Staff should not be in any danger at work, and violent or threatening behaviour towards staff will not be tolerated.

All staff will report and record (using the accident report form provided as Appendix 6) any incidents of aggression or violence (or dangerous occurrences) directed to themselves to the Headteacher immediately. This applies to violence from pupils, visitors or other staff.

26. Warning and Banning

The school will give warning in writing to any parent/carer that is behaving in a manner thought to be threatening or abusive to explain this behaviour is unacceptable and will not be tolerated.

Section 547 of the Education Act 1996, and its updates, make it a criminal offence to commit nuisance and trespass on school sites. The Headteacher, or the Trust's Competent Health & Safety Advisor acting on the Headteachers behalf, is authorised to act on the school's behalf in taking proportionate action, in accordance with natural justice, in exercising those powers on our behalf.

Schools are not public places, and the school can decide who is welcome, or not, using their rights as Landlord of the site.

Parents/Carers will be given a home/school contract to explain expectations of their behaviour and procedures if these expectations are not met.

27. Working at height

The school will ensure that work is properly planned, supervised and carried out by competent people with the skills, knowledge and experience to do the work. A risk assessment should be completed for instances of working at height.

In addition:

- The Site Team retains ladders for working at height
- Pupils are prohibited from using ladders
- Staff will wear appropriate footwear and clothing when using ladders
- Contractors are expected to provide their own ladders for working at height
- Before using a ladder, staff are expected to conduct a visual inspection to ensure its safety
- Access to high levels, such as roofs, is only permitted by trained persons
- Contractors are expected to provide their own equipment and will not be permitted to use the school's equipment.

Appendix 1 Blagdon Primary School - A high level summary of the school’s strategic approach to effective Health and Safety management

Schools			
Plan	Do	Check	Act
Annual conversation to discuss Health & Safety performance and risks to identify actions for the coming year (H&S Committee)	Comply with health and safety legislation and the Trust’s Health and Safety Policy (Headteacher)	Review, challenge and update the risk register for any Health and Safety concerns, changes or legal requirements three times a year (LGB)	Take remedial action to resolve or improve Health & Safety performance (Headteacher)
Biennial review of the schools Health & Safety Policy following updated template policy from the Trust	Continually update the risk register for any Health and Safety concerns, changes or legal requirements (Headteacher)	Receive annual supportive audit of Health & Safety performance from the Trust’s competent advisor (H&S Committee or equivalent)	
Ensure sufficient resources are planned within the budget to meet Health & Safety responsibilities (Headteacher and LGB)	Review risk assessments in a timely manner to reflect any changes in circumstances, procedures or legislation but at least every three years (Headteacher)	Have termly Health & Safety meeting with the Hub Estates Lead (Headteacher)	
		Review H&S performance including monitoring data three times a year (H&S Committee)	

Appendix 2 Fire Safety Checklist

Issue to check	Yes/No
Are fire regulations prominently displayed?	
Is fire-fighting equipment, including fire blankets, in place?	
Does fire-fighting equipment give details for the type of fire it should be used for?	
Are fire exits clearly labelled?	
Are fire doors fitted with self-closing mechanisms?	
Are flammable materials stored away from open flames?	
Do all staff and pupils understand what to do in the event of a fire? - please see below:	
Refresher training provided annually for all staff and pupils	
Induction training provided for new staff and pupils	
All staff and pupils made aware of any new fire risks	
Can you easily hear the fire alarm from all areas?	

Signed:

Position:

Date:

Appendix 3 Asbestos Management Plan & Guidance

Introduction

This document sets out the procedures for managing asbestos containing material on any Lighthouse Schools Partnership premises.

a) The presence in the work place of asbestos containing materials (ACM's) does not in itself constitute an active danger. Persons may be exposed to significant risk, however, if activities which give rise to airborne asbestos fibre release-for example: cutting drilling breaking or machining are carried out, and good management techniques are not applied.

b) No member of staff, contractor or member of public is expected be exposed to asbestos fibres when working on or visiting a Lighthouse Schools Partnership school. Staff whose normal duties may bring them into contact with existing ACM's such as site maintenance staff, electrical and building maintenance contractors will have previously attended an asbestos awareness training course.

Statement

The Trust is committed to providing a safe and healthy work place. To achieve this asbestos is managed and exposure eliminated or reduced in accordance with current regulations.

a) An effective asbestos management strategy is maintained.

b) Appropriate risk assessments are carried out recorded and reviewed.

c) Safe systems of working with asbestos are promoted with the schools own staff and external contractors.

d) Asbestos awareness for school staff is promoted through asbestos awareness training annually.

e) Contractors working at any Trust school will provide written evidence of up to date staff asbestos awareness training on an annual basis.

f) An up to date asbestos register listing all identified ACM's, with floorplans showing ACM locations (See Appendix 4).

g) All Contractors and school maintenance staff are required to sign to confirm they have seen the asbestos register in relation to the area that they will be working in or the activity they will be undertaking.

h) The designated duty holder for each school unless otherwise stated is the Headteacher. The Duty holder can nominate a member of staff to act as the responsible person for managing asbestos on the school premises.

i) If any ACM is damaged the area will be sealed off immediately to prevent access to the area. Emergency procedures to be followed are:

EMERGENCY PROCEDURES

**IF AT ANY TIME YOU COME ACROSS A DAMAGED ASBESTOS MATERIAL
OR IDENTIFY A SUSPICIOUS MATERIAL YOU MUST:**

- 1. STOP WORK**
- 2. SECURE THE AREA e.g. close windows and doors affix warning signage.**
- 3. NOTIFY THE SITE RESPONSIBLE PERSON OR DUTY HOLDER.**
- 4. RECORD and REPORT the timeline of events and affected individuals at the earliest opportunity.**

j) A refurbishment or demolition survey will be required to be used to locate and describe, as far as reasonably practical, all asbestos containing materials in the area where the building works will take place or the whole building if demolition is planned.

k) The survey will be fully intrusive and involve destructive inspection, as necessary, to gain access to all areas including those that may be hard to reach.

Responsibilities

The Board of Trustees have overall responsibility for the asbestos policy and management guidance and plan. The Trustees responsibilities include:

- Directing the asbestos policy at operational level.
- Ensure asbestos registers are in place.
- Ensure annual re-inspections are carried out by a competent person.
- Unless otherwise stated the Head teacher will be the designated Duty Holder for asbestos management within the School.
- The Head teacher can nominate a responsible person to manage the asbestos on the School premises but cannot discharge his or her legal duty.

The duty holder and/or the responsible person responsibilities include:

- Assess and monitor the condition of the ACM's
- Ensure that all contractors and School maintenance staff have sufficient and relevant asbestos training no more than 12 months apart.
- Record and report any damage caused to the Headteacher.
- Ensure that all contractors are given access to the asbestos register and obtain a signature to retain as proof.
- Ensuring contractors work in accordance with this guidance document.
- Ensuring that asbestos management is included on the agenda at all building or maintenance pre-contract meetings.
- Maintain the asbestos management & communication plan provided as Appendix 5.

Asbestos contractors are responsible for:

- Complying with current regulations.
- Providing the necessary documentation to the HSE before notifiable work commences.
- Attend pre- contract meetings and provide risk assessments and safe methods of work.
- Attending site to assess and prepare quotations for ACM removal of encapsulation work.
- Carry out annual asbestos register inspections
- Carry out refurbishment and demolition surveys.
- Attend and make safe any areas of School buildings affected by asbestos disturbance of damage.
- Provide copies of notification and consignment notes and other documentation for School records.

School staff

It is unlikely that school employees will be exposed to an ACM. However, they have the following responsibilities:

- Not to disturb or commission others to disturb any part of the fabric of a building without consultation with the duty holder or responsible person e.g. drilling or fixing nails or screws or using drawing pins.
- To report immediately any materials or damage in their work area which they suspect to be an ACM to the duty holder or nominated responsible person.

IF IN DOUBT LEAVE IT ALONE AND REPORT IT

Further reference

Health and Safety at Work Act 1974

Control of Asbestos Regulations 2006

Management of Health and Safety at Work Regulations 1999

Construction Design Management Regulations 2015

Other related regulations

Workplace (Health and Welfare regulations) 1992

CoSHH regulations 2002

Appendix 4 Asbestos Record - Blagdon Primary School

Item No.	Building Name	Room No. & Name	Asbestos Containing Product	Recommended Action	Risk
3	Blagdon Primary School	External	Insulating Board Panel - Soffit (Presumed)	Encapsulate & Monitor Condition	Medium
1	Blagdon Primary School	007 First Aid Room	Insulating Board Panel - Walls	Monitor Condition	Low
4	Blagdon Primary School	External	Cement Roof Tiles - Roof (Presumed)	Monitor Condition	Low

ACM's removed and non-access items accessed since last re-inspection/survey:

- No items removed since last survey

Item No.	Building Name	Room No. & Name	Restriction	Status
5	Blagdon Primary School	External	Cement Undercloak – Roof (Presumed)	Removed, No Further Action Required

Inaccessible areas encountered during the time of the re-inspection, for which no condition information was obtained:

Item No.	Building Name	Room No. & Name	Restriction
2	Blagdon Primary School	Ground Floor, 014 - Classroom 3	No access gained to ceiling due to height restrictions

Appendix 5 Asbestos Management and Communication Plan

1	Name of premises	Blagdon Primary School
2	Duty Holder	Jenny Campbell, Headteacher
3	Nominated responsible person(s) for managing asbestos on the premises	Tiffany Collard, Admin & Finance Officer
4	Statutory duty holder with overall responsibility	Lighthouse Schools Partnership Board of Trustees
5	Date the management plan was produced	July 2021
	Date of next review	February 2023 in line with H&S Policy Review
6	How is the location and condition recorded?	Contractor, asbestos re-inspection
	How and where is the information recorded	Every - online compliance system
	Date of the last asbestos condition annual inspection	16 th September 2021
	How is any ACM identified within the School?	Through outside consultants
7	Results of the survey and any action required	Low risk, - monitor condition
	What action was taken as a result of the last independent survey?	No further action required
	Has the register been annotated with actions taken	No actions taken recently but has been annotated in the past
	Date of subsequent visual inspection of all identified areas	Monthly, recorded in Every
8	How is the information shared with contractors who may require it?	Via Caretaker (WSS) or Office staff
	How have staff been informed	Via email or staff meeting updates
	How are contractors and maintenance staff made aware of the survey and any ACM.	Via sharing Appendix 4 or reviewing copy of reports in Asbestos file kept in School Office
	Who is the School point of contact for contractors?	Headteacher - Jenny Campbell Admin & Finance Officer - Tiffany Collard Caretaker - Weston Support Services Ltd
	What procedures are there for internal maintenance staff - who does the required work go through to authorize and ensure asbestos information is shared	See above
9	Training: List all staff who have received asbestos awareness training and annual refresher training. The date the training took place and who it was delivered by.	Jenny Campbell Tiffany Collard Andy Rout - Weston Support Services Ltd
10	Competent asbestos contractor(s) working with the School	Allium Enviromental - 01179 600791 Email: enquiries@allium.uk.net
11	LSP Health and Safety advisors	Delegated Services - 01275 795827 info@delegatedservices.org

Appendix 6 Accident, Incident or Dangerous Occurrence Report

Name of injured person		Role/class	
Date and time of incident		Location of incident	
Incident details			
<i>Describe in detail what happened, how it happened and what injuries the person incurred</i>			
Action taken			
<i>Describe the steps taken in response to the incident, including any first aid treatment, and what happened to the injured person immediately afterwards.</i>			
Follow-up action required			
<i>Outline what steps the school will take to check on the injured person, and what it will do to reduce the risk of the incident happening again</i>			
Name of person attending the incident			
Signature		Date	

Appendix 7 - Recommended absence period for preventing the spread of infection

This list of recommended absence periods for preventing the spread of infection is taken from nonstatutory guidance for schools and other childcare settings from the National Institute for Health Protection.

Infection or complaint	Recommended period to be kept away from school or nursery
Athlete's foot	None
Bacillary Dysentery (Shigella)	Microbiological clearance is required for some types of shigella species prior to the child or food handler returning to school (age of child and infectious agent).
Campylobacter	Until 48 hours after symptoms have stopped.
Chicken pox (shingles)	Cases of chickenpox are generally infectious from 2 days before the rash appears to 5 days after the onset of rash. Although the usual exclusion period is 5 days, all lesions should be crusted over before children return to nursery or school. A person with shingles is infectious to those who have not had chickenpox and should be excluded from school if the rash is weeping and cannot be covered or until the rash is dry and crusted over.
Cold sores	None
Conjunctivitis	None
COVID-19	The isolation period includes the day symptoms started (or the day a test was taken if there are no symptoms), and the next 10 full days. Isolation can end after 10 full days if symptoms have gone, or if the only symptoms are a cough or anosmia, which can last for several weeks. If a high temperature remains after 10 days or if they are otherwise unwell, they should stay at home and seek medical advice
Cryptosporidiosis	Until 48 hours after symptoms have stopped.
Diarrhoea and/or vomiting (Gastroenteritis)	Children and adults with diarrhoea or vomiting should be excluded until 48 hours after symptoms have stopped and they are well enough to return. If medication is prescribed, ensure that the full course is completed and there is no further diarrhoea or vomiting for 48 hours after the course is completed. For some gastrointestinal infections, longer periods of exclusion from school are required and there may be a need to obtain microbiological clearance. For these groups, your local health protection team, school health advisor or environmental health officer will advise. If a child has been diagnosed with cryptosporidium, they should NOT go swimming for 2 weeks following the last episode of diarrhoea.
E. coli (verocytotoxigenic or VTEC)	The standard exclusion period is until 48 hours after symptoms have resolved. However, some people pose a greater risk to others and may be excluded until they have

	a negative stool sample (for example, pre-school infants, food handlers, and care staff working with vulnerable people). The health protection team will advise in these instances.
Food poisoning	Until 48 hours from the last episode of vomiting and diarrhoea and they are well enough to return. For some infections, longer periods of exclusion from school are required and there may be a need to obtain microbiological clearance. For these groups your local Health Protection Team will advise. All outbreaks of food poisoning
Giardia	Until 48 hours after symptoms have stopped.
Glandular fever	None (can return once they feel well).
Hand, foot and mouth	Children are safe to return to school or nursery as soon as they are feeling better, there is no need to stay off until the blisters have all healed. Keeping your child off for longer periods is unlikely to stop the illness spreading. Exclusion of a well pupil is not required.
Head lice	None
Hepatitis A	Exclude cases from school while unwell or until 7 days after the onset of jaundice (or onset of symptoms if no jaundice, or if under 5, or where hygiene is poor). There is no need to exclude well, older children with good hygiene who will have been much more infectious prior to diagnosis.
Hepatitis B	Acute cases of hepatitis B will be too ill to attend school and their doctors will advise when they can return. Do not exclude chronic cases of hepatitis B or restrict their activities. Similarly, do not exclude staff with chronic hepatitis B infection. Contact your local health protection team for more advice if required.
Hepatitis C	None
Impetigo	Until lesions are crusted and healed, or 48 hours after starting antibiotic treatment.
Influenza (flu)	There is no precise exclusion period. Adults and children with symptoms of influenza are advised to remain at home until recovered.
Measles	Cases are infectious from 4 days before onset of rash to 4 days after so it is important to ensure cases are excluded from school during this period.
Meningitis	Once the child has been treated (if necessary) and has recovered, they can return to school. No exclusion is needed.
MRSA (methicillin resistant Staphylococcus aureus)	None.
Mumps	5 days after onset of swelling (if well).
Ringworm	Exclusion not needed once treatment has started.
Rotavirus	Until 48 hours after symptoms have subsided.
Rubella (German measles)	5 days from appearance of the rash.
Salmonella	Until 48 hours after symptoms have stopped.
Scabies	The infected child or staff member should be excluded until after the first treatment has been carried out.

Scarlet fever	Children can return to school 24 hours after commencing appropriate antibiotic treatment. If no antibiotics have been administered the person will be infectious for 2 to 3 weeks. If there is an outbreak of scarlet fever at the school or nursery, the health protection team will assist with letters and factsheet to send to parents or carers and staff.
Slapped cheek syndrome, Parvovirus B19, Fifth's disease	None (not infectious by the time the rash has developed).
Typhoid and Paratyphoid fever	Seek advice from environmental health officers or the local health protection team.
Threadworm	None.
Tuberculosis (TB)	Pupils and staff with infectious TB can return to school after 2 weeks of treatment if well enough to do so and as long as they have responded to anti-TB therapy. Pupils and staff with non-pulmonary TB do not require exclusion and can return to school as soon as they are well enough.
Whooping cough (pertussis)	A child or staff member should not return to school until they have had 48 hours of appropriate treatment with antibiotics and they feel well enough to do so or 21 days from onset of illness if no antibiotic treatment.

Appendix 8 Schedule of School Risk Assessments

The school has the following risk assessments in place:

Ref. number	Whole School/Site Team/Staff /Class	Task/ Activity/ Area	Reviewed
BLA001	Whole School	Access/Egress	Triennial
BLA002	All Classes	Activities / Visits General	Triennial
BLA003	Whole School	Animals On Site / School Pets	Triennial
BLA004	Whole School	Arts & Crafts	Triennial
BLA005	Whole School	Asbestos	Annual
BLA006	Whole School	Before & After School Supervision	Triennial
BLA007	Whole School	Bullying	Triennial
BLA008	All Classes & Staff	Candles in School Assembly, etc.	Triennial
BLA009	Site Team	Caretaking - Lifting and Carrying	Triennial
BLA010	Site Team & Staff	Chemicals	Triennial
BLA011	All Classes & Staff	Classroom - condition of rooms	Triennial
BLA012	All Classes & Staff	Classroom - play equipment and toys, etc.	Triennial
BLA013	Site Team & Staff	Cleaning using equipment	Triennial
BLA014	Whole School	Confined spaces	Triennial
BLA015	Site Team & Staff	Contractors - selection and site work	Triennial
BLA016	Whole School	Covid 19	As Required
BLA017	Site Team & Staff	Deliveries - receiving and distribution of	Triennial
BLA018	All Classes & Staff	Display Screen Equipment	Triennial
BLA019	Staff, Children, Visitors	Drama / Productions In The Hall	Triennial
BLA020	Staff	Driving	Triennial
BLA021	Whole School	Drugs & Alcohol	Triennial
BLA022	Whole School	Esafety	Triennial
BLA023	Whole School	Electrical equipment	Triennial
BLA024	H/T & Office	Electrical safety fixed installation	Triennial
BLA025	H/T & Office	Electrical safety PAT	Triennial
BLA026	Staff	Entertainers/performers	Triennial
BLA027	Staff	Environment (waste disposal)	Triennial
BLA092	Whole School	End of day	Triennial
BLA028	Staff	Expectant and new mothers-SAMPLE	Triennial
BLA029	Staff	Exposure to sharps	Triennial
BLA030	Whole School	Fingerguards and Door Closers	Triennial
BLA031	H/T & Office	Fire Management	Annual

BLA032	Staff	First Aid	Triennial
BLA033	Staff	Food Tech_Preparation_Catering	Triennial
BLA034	All Classes & Staff	Gardening	Triennial
BLA035	Whole School	Glass in Playground	Triennial
BLA036	Site Team	Glazing	Triennial
BLA037	All Classes & Staff	Gymnasium / School Hall	Triennial
BLA038	Site Team	Hazardous Substances	Triennial
BLA039	All Classes & Staff	Hygiene - General	Triennial
BLA040	Staff	Individual Pupil	Triennial
BLA041	All Classes & Staff	Infection	Triennial
BLA042	Staff	Knives, use of	Triennial
BLA043	Staff, Site Team	Ladders / stepladders, use of	Triennial
BLA044	Headteacher	Leadership/management	Triennial
BLA045	H/T & Office	Legionella	Annual
BLA046	H/T & Office	Lettings	Triennial
BLA047	All Classes & Staff	Lockdown	Triennial
BLA048	Staff	Lone Working	Triennial
BLA049	Staff	Long Working Hours	Triennial
BLA050	Staff	Lunchtime Supervision (Hall)	Triennial
BLA051	Staff	Manual Handling, inc equipment & furniture	Triennial
BLA052	Staff	Medicines, Storage & Administration	Triennial
BLA053	Staff	Microwaves, use of	Triennial
BLA054	Staff & Visitors	Mobile phone, use on site	Triennial
BLA055	Staff	Money Handling	Triennial
BLA056	Office	Office Environments - School House	Triennial
BLA057	Staff	PE Equipment & Sports Activities	Triennial
BLA058	Staff, Children	Peer on Peer Sexual Abuse	Triennial
BLA059	Staff	People using crutches	Triennial
BLA060	Staff	Physical restraints	Triennial
BLA061	All Classes & Staff	Playground Equipment, outdoors	Triennial
BLA062	Staff	Playground Supervision	Triennial
BLA063	Site Team & Staff	Portable Heaters	Triennial
BLA064	Site Team	Power Tools	Triennial
BLA065	All Classes & Staff	Practical lessons	Triennial
BLA066	H/T & Staff	PTA Events / School Fetes	Triennial
BLA067	Site Team	Repair & Maintenance	Triennial
BLA068	H/T & Staff	Responding to Intruders	Triennial
BLA069	All Classes & Staff	Sandpits / Sandtables, use of	Triennial

BLA070	Staff	Safeguarding	Triennial
BLA071	Headteacher	School Dog	Triennial
BLA072	H/T, Staff & Site Team	School Premises, site and buildings	Triennial
BLA073	H/T & Office	Security	Triennial
BLA074	Staff	Site Meetings & Home Visits	Triennial
BLA075	All Classes & Staff	Slips, Trips & Falls	Triennial
BLA076	Site Team, Whole School	Snow & Ice / Salt & Grit use	Triennial
BLA077	Staff	Special Needs	Triennial
BLA078	Whole School	Sporting Fixtures	Triennial
BLA079	Site Team & Staff	Storage Areas	Triennial
BLA080	Staff, Volunteers	Spray Mount Container or Similar, use of	Triennial
BLA081	Staff	Stress : Sample	Triennial
BLA082	Whole School	Sun Safety	Triennial
BLA083	Whole School	Swimming	Triennial
BLA084	Staff	Toasters, use of	Triennial
BLA085	Staff	Travelling by Coach : Sample	Triennial
BLA086	H/T & Staff	Vehicles, Cars, Pedestrian Separation	Triennial
BLA087	Staff	Violence/Threatening Behaviour	Triennial
BLA088	Staff	Volunteers	Triennial
BLA089	Site Team	Work Equipment	Triennial
BLA090	Staff	Work Experience, Apprenticeship, etc.	Triennial
BLA091	Site Team & Staff	Working at Height	Triennial
BLA092	Whole School	End of Day- SEE ABOVE	Triennial